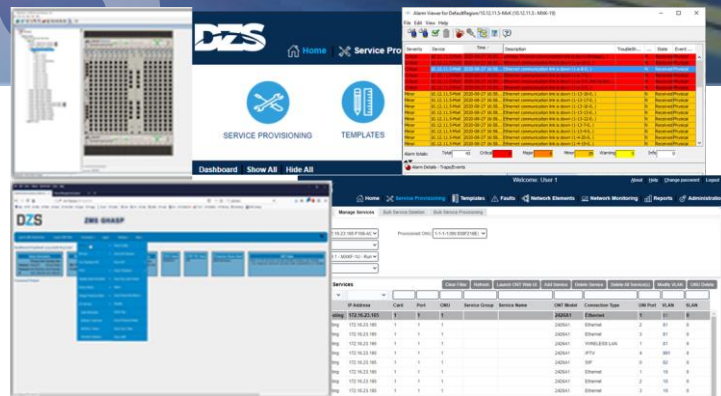


ZMS



Complete Network and Service Management Platform

ZMS is a standards-based, carrier-class network management solution that provides management support for DZS multi-service networks. The ZMS client-server architecture uses proven industry standard components such as an application server framework and a relational database to provide a robust platform. ZMS automates complex, tedious and error-prone tasks, thereby raising productivity, improving accuracy and reducing costs for operators.

Client / Server Architecture

Features & Benefits

- + End-to-End Management
- + Manage Voice, Data and Video Services
- + Comprehensive FCAPS
- + Open Interface for OSS Integration
- + Manages DZS Network Elements
- + Scalable to support multiple locations and millions of subscribers

ZMS has two GUI clients. The first is a fat-client implementation called NetHorizon it provides an easy-to-use GUI for operators to manage and troubleshoot DZS networks. Maps and sub-maps represent regions, making it intuitive for network operators to drill down for views of chassis, cards, ports, logical interfaces and lists of services. Multiple client support ensures that many operators performing discrete management tasks can simultaneously use data from the ZMS Server. The second GUI is a web based application that provides similar features to the NetHorizon app, but extends the network operators capabilities by using cross chassis templates for optical components. This allows a single service template or complete service group to be applied to any optical CPE device within the network. Either or both GUI's can be used simultaneously. We have deployments with more than 100 simultaneous users.

ZMS

The ZMS server provides a suite of management applications to support fault, configuration, performance, security and diagnostics functions. It communicates with the DZS devices via industry-standard protocols such as SNMP and FTP/SFTP, using reliable mechanisms to ensure timely transfers of management information. Service, configuration, and subscriber data are stored in a relational database.

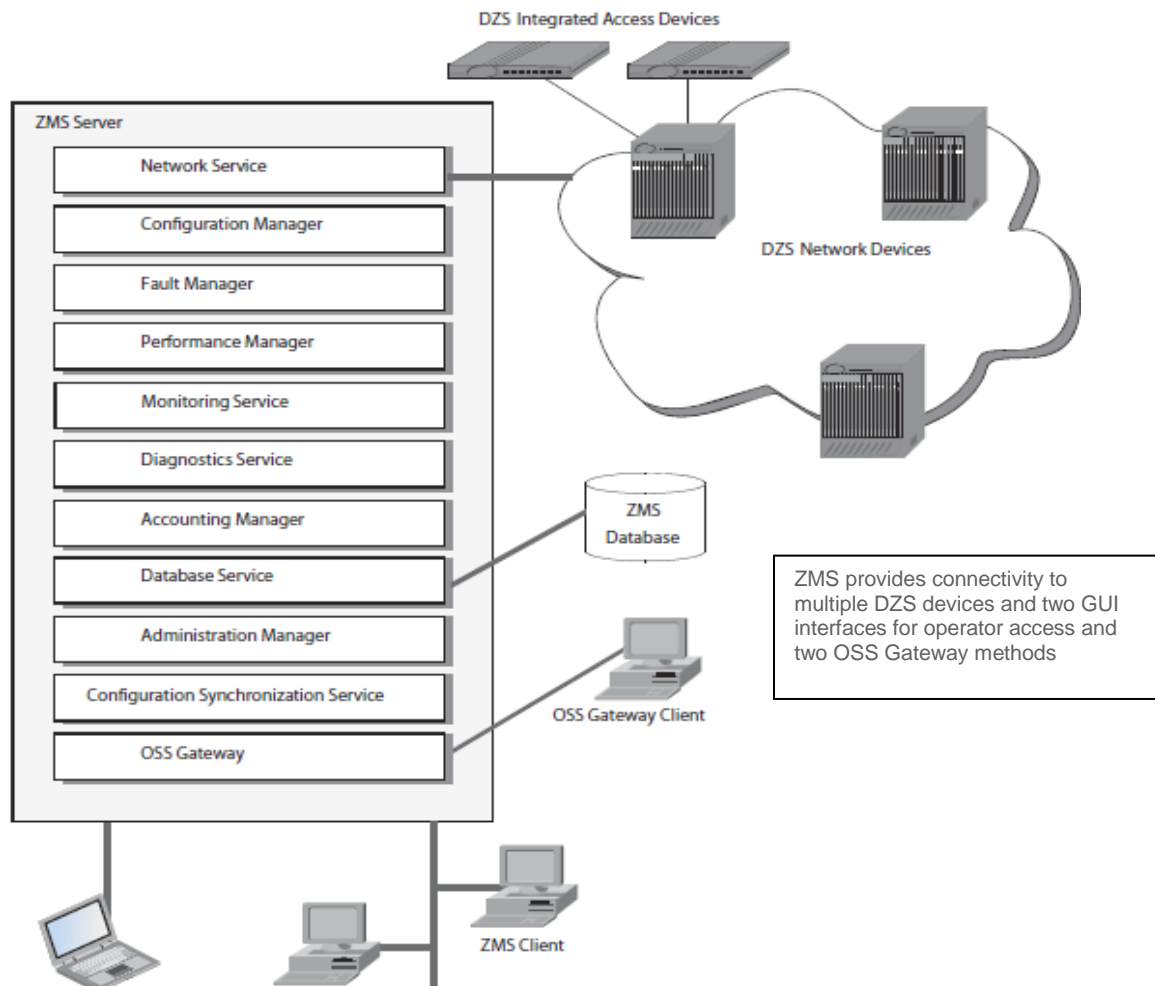
Full Featured Management System

ZMS is a full-featured management system including full FCAPS implementation (Fault, Configuration, Administration, Performance and

Security). ZMS's FCAPS functionality enables quick turn-up of devices, advanced tools for increased productivity, real-time traffic and service monitoring and historical data collection for trending and analysis.

OSS Integration

ZMS OSS Gateway provides an open standards based XML or NETCONF interface for seamless integration into existing and new service provider Operations Support Systems (OSS). The interface provides for bi-directional transfer of management information for tasks such as automated flow through provisioning, inventory management, device configuration, capacity and status of various network entities.



Technical Specifications

Specifications	
Interfaces - Northbound	OSS Gateway – XML/SOAP
	OSS Gateway – Netconf
Interfaces - Operator	NetHorizon FAT Java Client
	Web Client – browser based client
Interfaces - Southbound	SNMP v2c, v3
	FTP
	TFTP
	SFTP
Management	IP connectivity for management
	In-band over IP
	Out-of-band via 10/100/1000 Ethernet
Operating Requirements	
Server Software Environment	Oracle Unbreakable Linux 7.x or 8.x
	RHEL 7.x or 8.x
	CentOS 7.x or 8.x
Server Hardware	For up to 10K CPE: 1 Xeon Bronze 1.7+ GHz, 8GB RAM, 2x10/100/1000 NIC, Minimum 2x 600GB in Raid Mirror, dual power supplies
	For up to 100K CPE: 1 Xeon Silver 41xx, 8-core 2.1+ GHz, 16GB Ram, 4x10/100/1000 NIC, Minimum 2x 600GB in Raid Mirror, dual power supplies
	For up to 1M CPE: 2 Xeon Silver 41xx, 8-core 2.1+ GHz, 16GB Ram, 4x10/100/1000 NIC, Minimum 2x 600GB in Raid Mirror, dual power supplies
Client requirements	Windows 7, 8 or 10
	2 GHz CPU, 8GB, 5GB free space
	Java 8 or later

Product Ordering

Product Name	
DZS-ZMS-BASE	ZMS Network Management Base Software. Includes 2 Server/30 User/50 Network Elements/100 CPE Licenses
DZS-ZMS-AL-CPE	ZMS additional 1,000 CPE Licenses
DZS-ZMS-AL-NE	ZMS additional 50 Network Elements Licenses
DZS-ZMS-AL-USER	ZMS additional 30 Concurrent Session Licenses (User licenses)
DZS-ZMS-AL-SERVER	ZMS additional 1 Server License
DZS-ZMS-AO-GW-XML	ZMS Add-on OSS Gateway XML/SOAP Interface
DZS-ZMS-AO-GW-NCY	ZMS Add-on OSS Gateway Netconf/Yang Interface

ZMS

Contact DZS today

www.dzsi.com | support@dzsi.com

